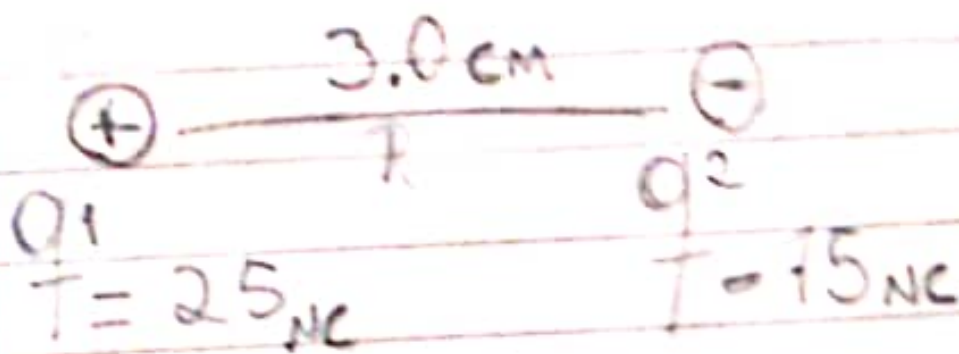


Formula

Calculo de la Magnitud



$$F_{q_1 q_2} = K \frac{q_1 q_2}{r^2}$$

$$K = \frac{(9 \cdot 10^9) (25 \cdot 10^{-9}) (15 \cdot 10^{-9})}{0.09 \text{ m}^2}$$

$$= \frac{16,875 \cdot 10^{-9}}{0.09 \text{ m}}$$

$$F_{q_1 q_2} = \boxed{187,500 \cdot 10^{-9} \text{ nC}}$$

NONO coulomb